



TRIDENT DEEPBLUE EM ROV RECEIVER

Product Overview

Trident DeepBlue is the worlds ONLY High Resolution Digital ROV subsea pig tracking receiver. It is also unique in that it can detect and display all EM signals detected in the search area.

Data from the DeepBlue is transmitted through the ROV multiplexer via Ethernet (or RS232) to the surface for realtime analysis. This realtime data is analysed by using the Trident PigView software giving the ability to detect multiple pigs on multiple frequencies.

Instruments

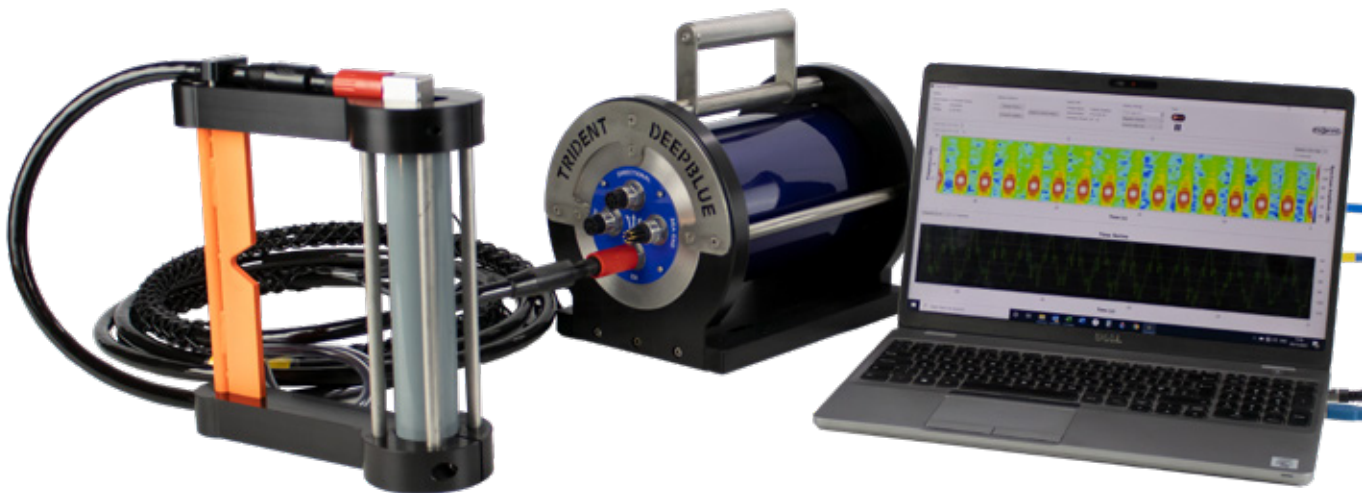
The Trident DeepBlue can capture EM signals by using the following instrument:

1. Trident 510 EM Antenna

Key Features

- Supports both Ethernet & RS232 in ONE unit
- Electromagnetic Detection
- Digital Processing for Multiple Pig Tracking
- Safety PRV - Internal 10PSI Over Pressure

Trident DeepBlue ROV Receiver



Trident 510 EM Antenna

Laptop c/w PigView Software



TRIDENT EM DEEPBLUE

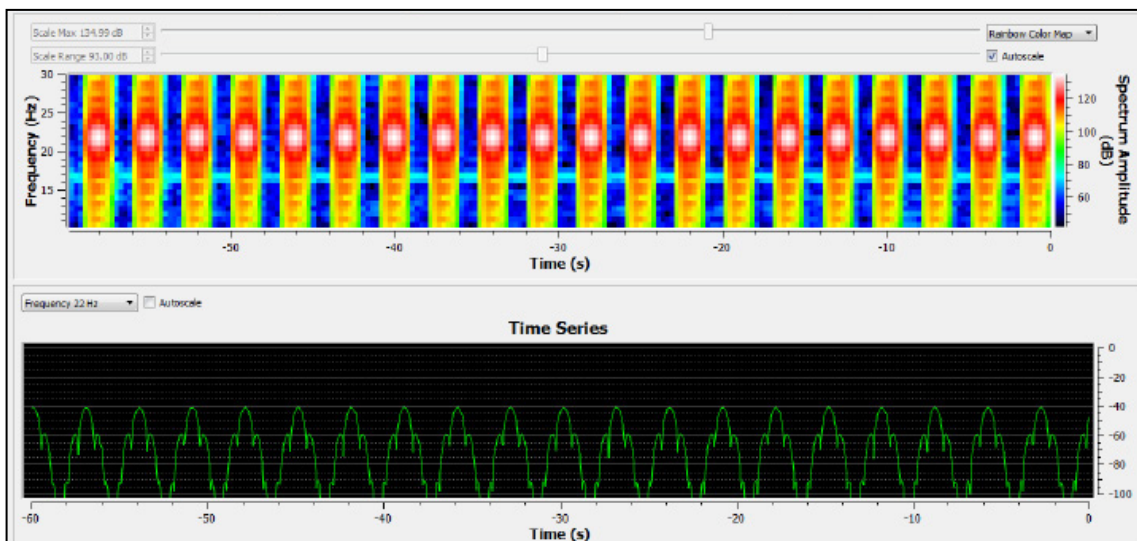
Technical Specification

Housing Material	Stainless Steel
Length	280mm
Diameter	185mm
Weight	12.5kg
Operating Depth	3000m
Power Source	+24V to +48V
Operating Temperature Range	-5°C to +50°C
Signal Output	RS232 or Ethernet
Input Connector Type	8 Way Micro Sub-Con
Output Connector Type	To match ROV Connection
Pressure Relief Valve	10 PSI



The Trident PigView software analyses the real time data received by the DeepBlue, examples can be seen below.

Typical EM Signal





TRIDENT 510 EM ANTENNA

Product Overview

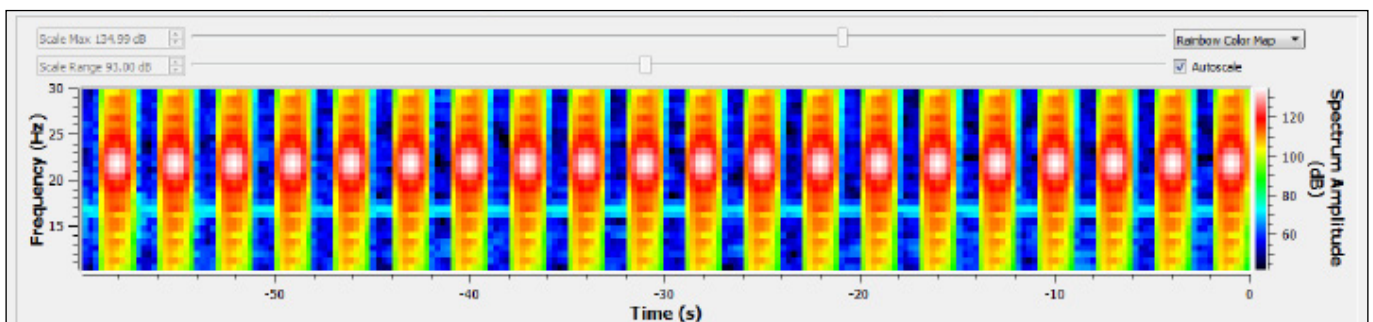
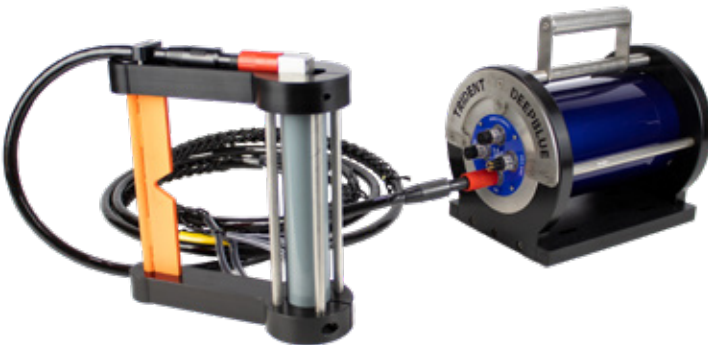
The Trident 510 is an Electromagnetic Antenna which is designed for use on ROV's or by Divers (Standalone) to accurately detect and locate pigs fitted with EM Transmitters. When combined with the Trident DeepBlue ROV Receiver, the system is capable of detecting multiple pigs on separate frequencies.

The Antenna can be used to track & accurately position ANY transmitter by using the device in TWO orientations.

- 1. Parallel to the pipeline:** To track and provide the approximate position of the pig AND also to witness pig passage.
- 2. Perpendicular to the pipeline:** This will provide a more accurate position of the pig by finding the 'Null Spot' of the EM transmission (i.e centre of the transmitter).

Technical Specification

Housing Material	Composite / SS316
Length	252.0mm
Diameter	70.0mm
Weight	3.5kg
Operating Depth	3000m
Operating Frequency	8Hz to 30Hz
Operating Temperature Range	-5°C to +50°C
Connector Type	8 Way Micro Sub-Con



Typical EM Signal Detected by PigView Software

